

# HEMA Rotator

## FR models from FINN-Rotor

HEMA's Rotator series in FR models comes in several variations with different SWL loads ranging from 2 ton to 10 ton and all rotate continuously.

The rotators can be mounted on virtually all truck cranes and smaller machines with custom links.

FR Rotators are a very versatile range, as its built-in dimensions fit a large part of the existing equipment in the transport industry.

The FR rotators are also distinguished by the relative low weight and physical size.

Flexibility also makes the rotator series very useful in the case of replacement of the other type / model with the flexible solutions that are regarding shaft and hollow dimensions as well as flange mounting for some models.

Please contact our sales department for correct selection of crane and tool link.

FR7 2 Tons  
Standard axel Round  
Ø49,5xØ25 Hole



FR10 4 Tons  
Standard axel Round  
Ø59xØ30 Hole



FR15 5,5  
Tons Flange  
model 4xØ17  
140c/c



FR15 5,5 Tons  
Standard axel Round  
Ø69xØ30 Hole

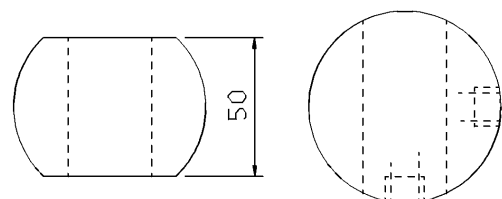
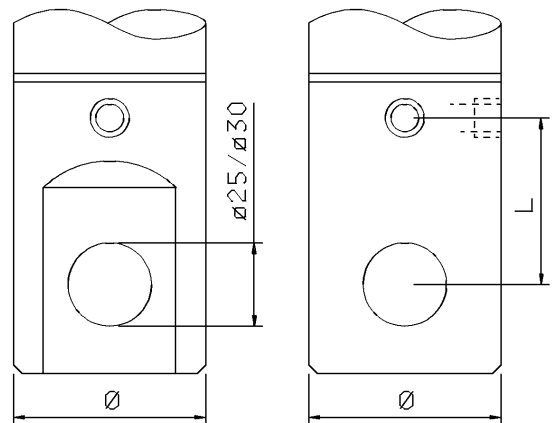
Adjustment of link between rotator and tool, see shaft sketch and back of this brochure for dimensions on shafts.



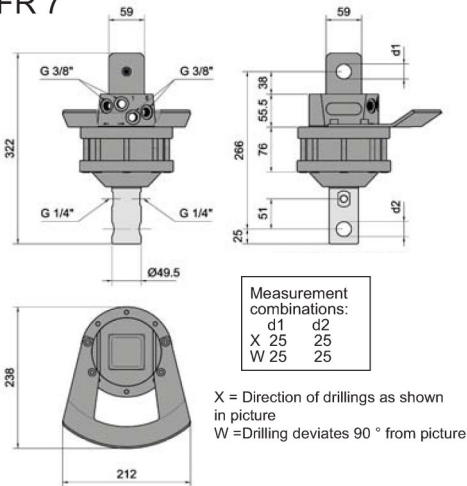
FR21 7,5 Tons  
Standard axel  
Round Ø78xØ30 Hole  
Flange 6xM16 BCD Ø173



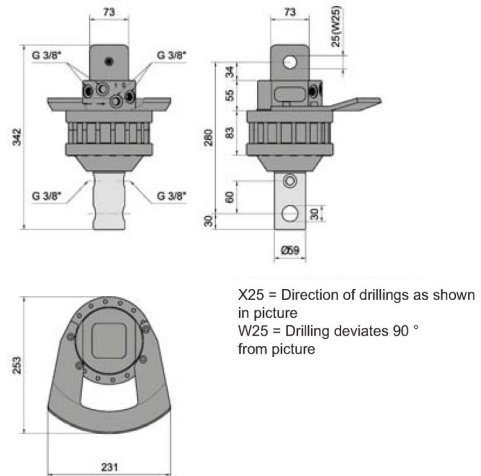
FR25 10 Tons  
Flange 6xM16 BCD Ø173



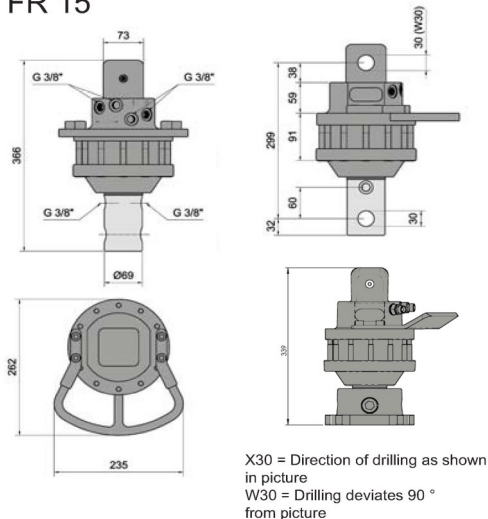
### FR 7



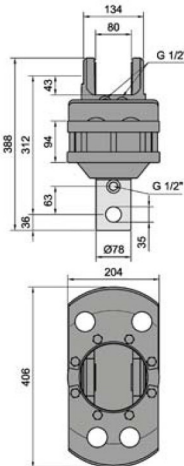
### FR 10



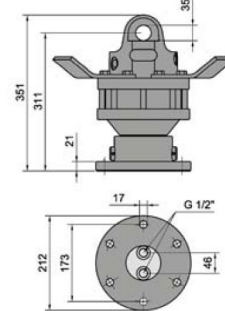
### FR 15



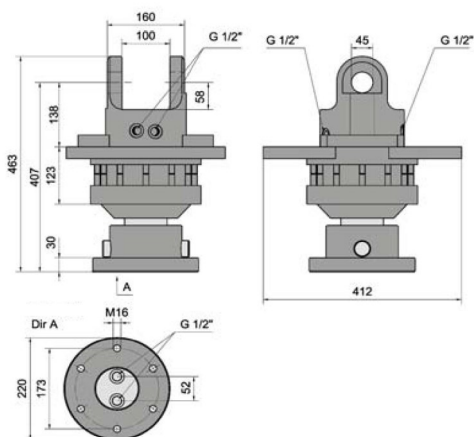
### FR 21 A



### FR 21 B



### FR 25 B



### Direction of upper attachment

