

HEMA

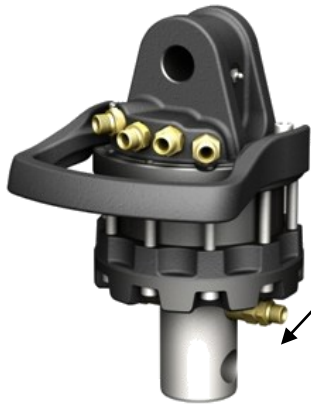
Crane Equipment



Guide to Choosing the right Rotator & link



Rotators with shafts



Models with round shaft

The most common model.

There is a vast range of rotators.
They are available from 1 T. upwards, with shaft or flange.

The most important thing when you have to find a link that fits, for mounting on the shaft, is to know the diameter of the shaft, as well as the size of the bolt-hole.

To choose the right suspension from the rotator and up to the Crane, you should know the following:

- Which type of suspension is needed. (Type 1/2/3/4)
- Which rotator it must fit.
- The dimensions of the top of the rotator.



Model with machined shaft

Are usually machined down to 50 mm.



Model with oil outlet 90° at bolt hole

Be aware of this, it requires a special suspension with machining for oil outlets.

Rotators with Flange



Model with square flange

4 x Ø17 140 c/c

There is a vast range of rotators.
They are available from 1 T. upwards, with shaft or flange.

The most important thing when you have to find a link that fits, for mounting on the shaft, is to know the bolt hole dimensions, as well as the circle diameter of the bolt holes.



To choose the right suspension from the rotator and up to the Crane, you should know the following:

- Which type of suspension is needed. (Type 1/2/3/4)
- Which rotator it must fit.
- The dimensions of the top of the rotator.

Model with rectangular flange

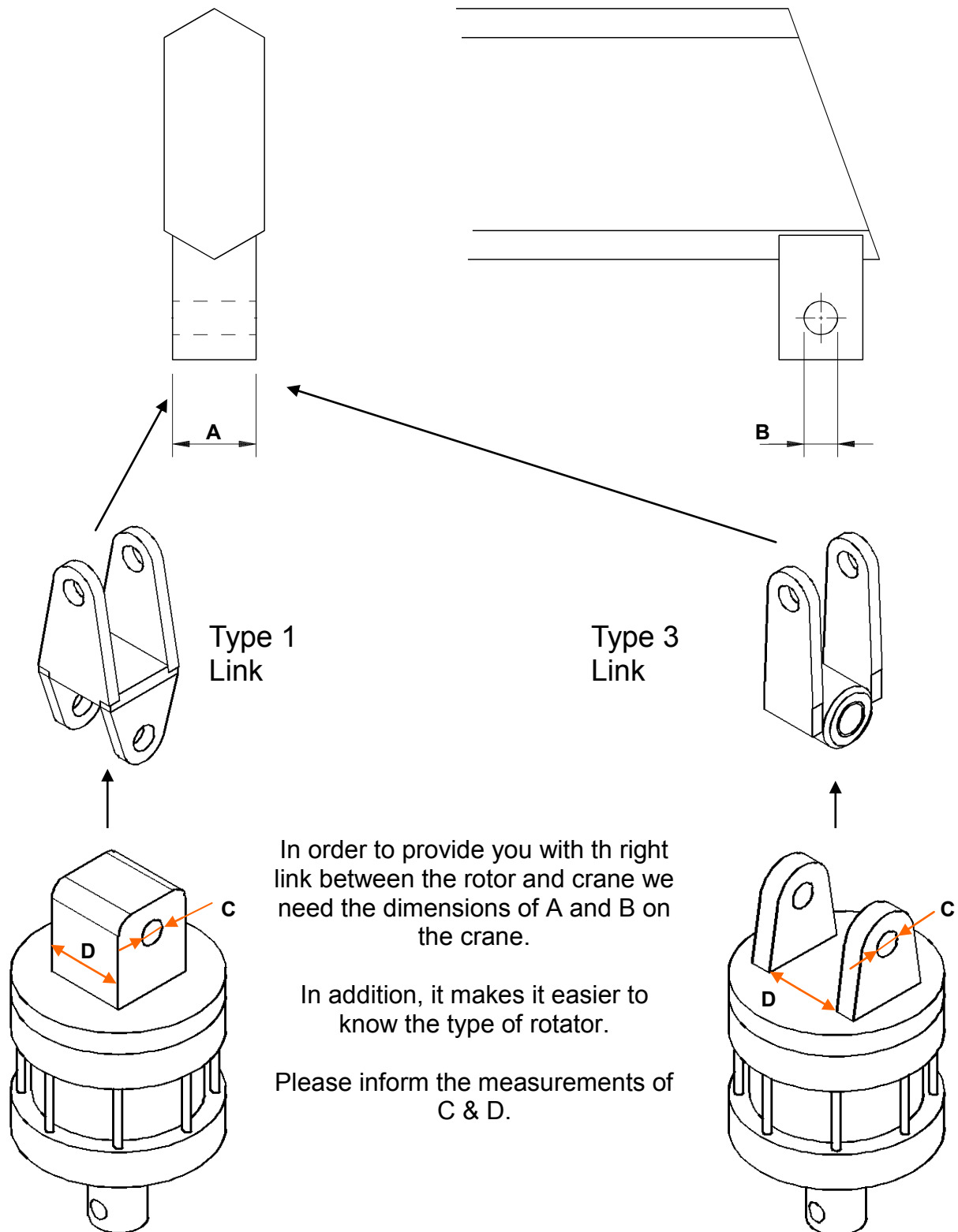
4 x Ø17 86,5x150 c/c



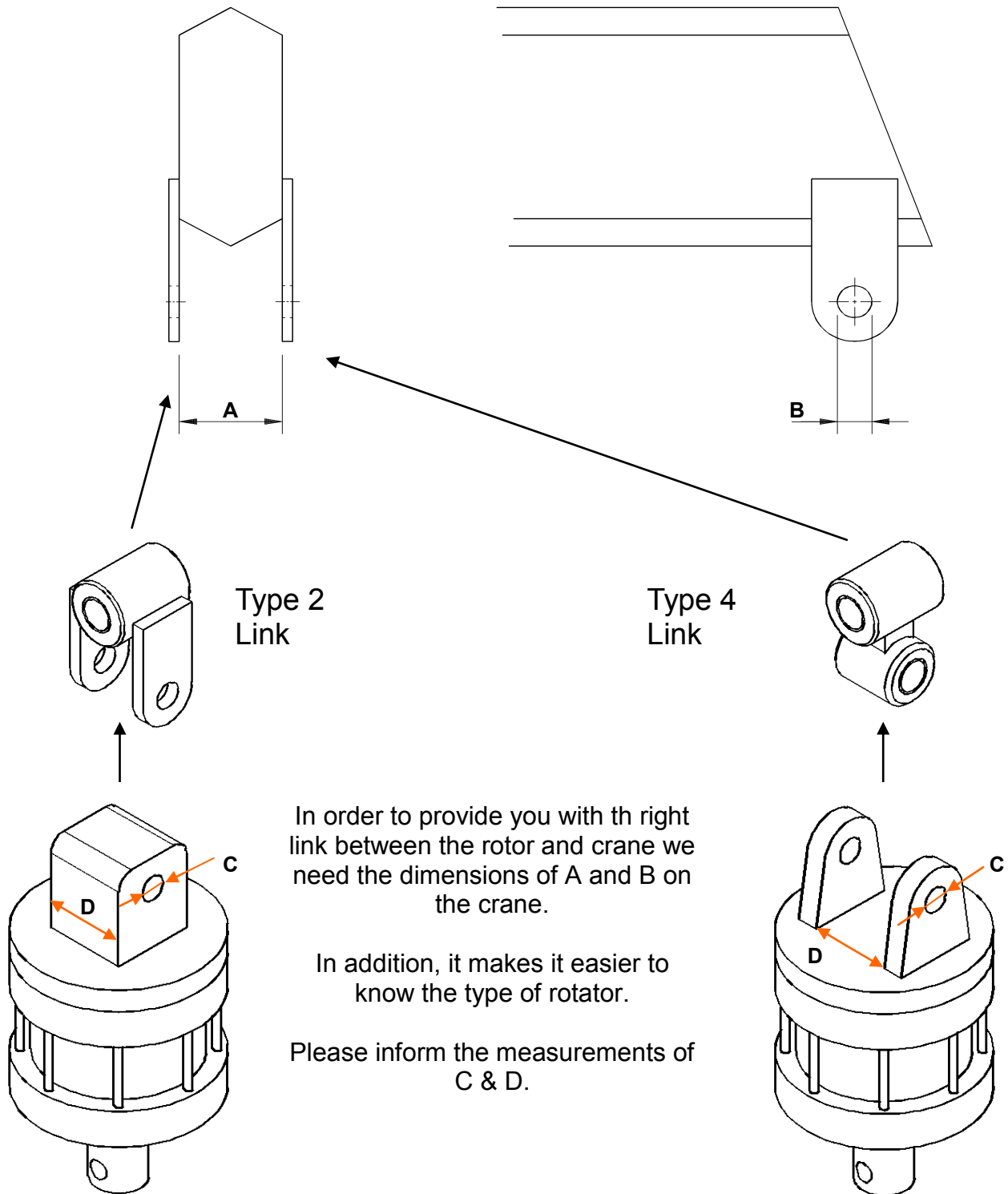
Model with "round" flange

6 x Ø17 BCD Ø173

Crane end for links Type 1 & 3

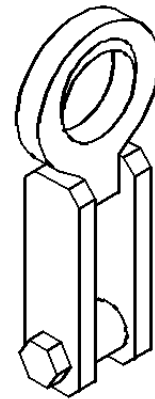


Crane end for links Type 1 & 3



The distance in the fork towards the pallet fork 36 - 38 mm
Distance from the upper edge of the roll to the edge of the eyelet /
bush / cross-piece under the fork about 95 mm.

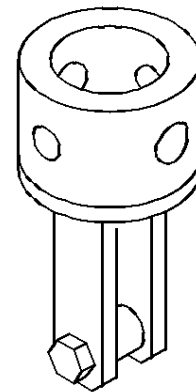
Standard hook link for pallet fork.



Fixed rotator link for pallet fork.

Dimensions of bushing and bolt.

- Ø50 x25/30 Cross drilled bolt hole
- Ø59 x25/30 Cross drilled bolt hole
- Ø69 x25/30 Cross drilled bolt hole
- Ø69 x30 drilled and machining at 90° angle at drilled hole.
- Ø78 x25/30 Cross drilled bolt hole
- Ø78 x30/35 Cross drilled bolt hole



Rotator link for pallet fork.

The distance in the fork, for rotator dimension of bolt.

50 x Ø25
50 x Ø30

59 x Ø25
59 x Ø30

69 x Ø25
69 x Ø30

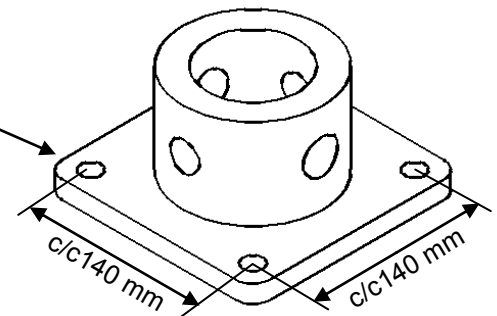
78 x Ø25 Custom - Not stocked
78 x Ø30 Custom - Not stocked
78 x Ø35 Custom - Not stocked



Fixed link for bolt mounting.

Hole pattern flange 140 c/c Ø17

Fixed link for bolt mounting	Ø39.5x20
Fixed link for bolt mounting	Ø49.5x25
Fixed link for bolt mounting	Ø59x25/30
Fixed link for bolt mounting	Ø63x30
Fixed link for bolt mounting	Ø69x25/30
Fixed link for bolt mounting	Ø69xØ30 Machined at 90° for oil.
Fixed link for bolt mounting	Ø75x25/30
Fixed link for bolt mounting	Ø78x25/
Fixed link for bolt mounting	Ø78x30/35



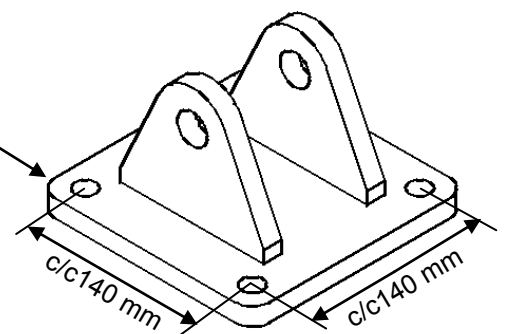
Hole pattern flange 86,5x150

Fixed link for bolt	86,5x150	Ø50x25
Fixed link for bolt	86,5x150	Ø59x25/30
Fixed link for bolt	86,5x150	Ø69x25/30
Fixed link for bolt	86,5x150	Ø69x30 Machined at 90° for oil.

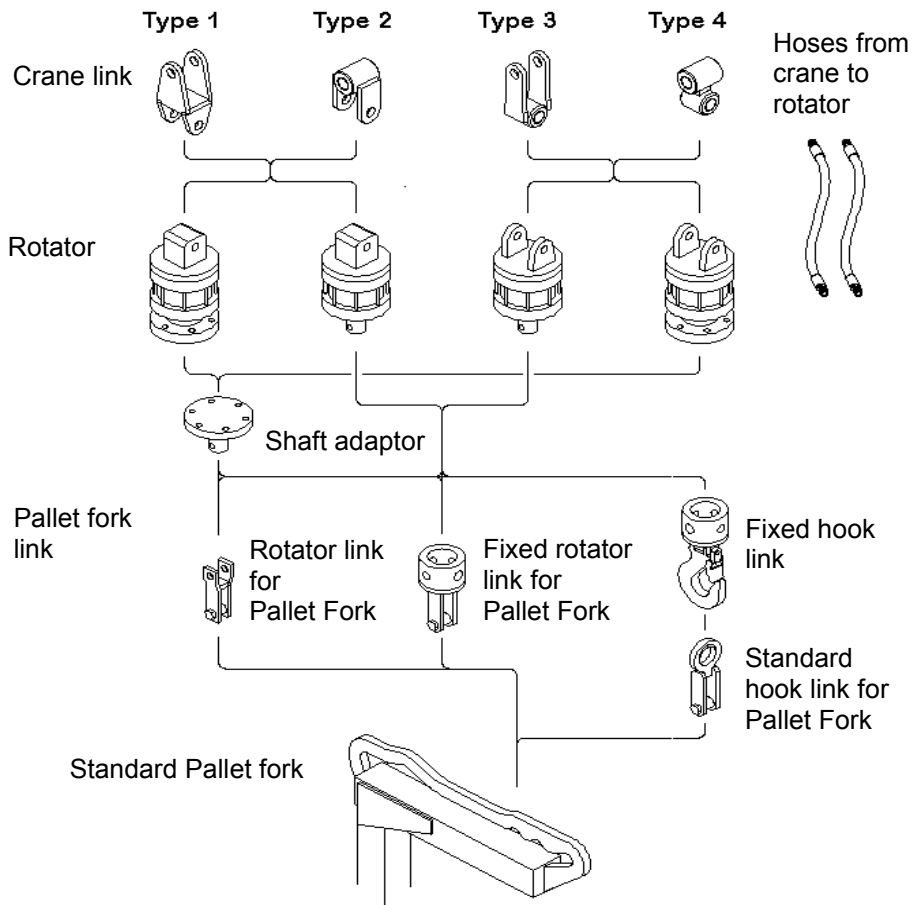
Standard-link for boltmounting.

Hole pattern flange 140 c/c Ø17

Std. link for bolt mounting	50xØ25
Std. link for bolt mounting	50xØ30
Std. link for bolt mounting	59xØ25
Std. link for bolt mounting	59xØ30
Std. link for bolt mounting	69xØ25
Std. link for bolt mounting	69xØ30
Std. link for bolt mounting	75xØ25
Std. link for bolt mounting	75xØ30
Std. link for bolt mounting	78xØ30



Mounting of pallet fork



Mounting of grapples and clamshell buckets.

