

# HEMA

## Rotator Hook

The HEMA rotator hooks can be mounted on most rotators for easier handling of general cargo, strap cargo etc.

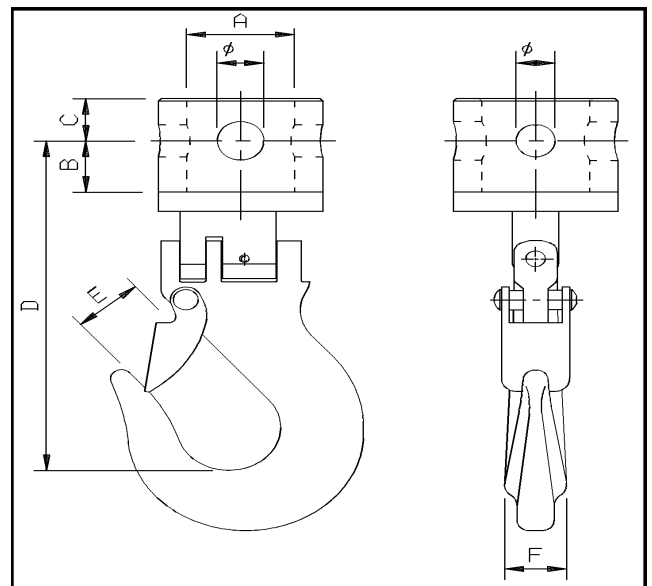
The rotator hooks are intended to be mounted on rotators with shafts. An optional shaft adapter can be provided for mounting on flange rotators.

The hook can easily be mounted with a single split bolt, making it easy to switch from having a rotator to having a hook.

With the hook mounted on the rotator, it gives the opportunity to handle and maneuver cargo with great precision and safety.



### Rotator Hook fits almost all rotators



Product nr.	Hook TYPE	Ø mm	A mm	B mm	C mm	D mm	E mm	F mm	SWL tons	Weight kg
3210 4305	Ø39,5 x Ø20	20	Ø 40,2	20	24	163	43	19	2	6
3210 4110	Ø49,5 x Ø25/30	25 / 30	Ø 50,2	40	30	257	50	36	8	9
3210 4320	Ø59 x Ø25/30	25 / 30	Ø 59,7	40	33	257	50	36	8	9
3210 4335	Ø69 x Ø25/30	25 / 30	Ø 69,7	40	33	257	50	36	8	9
3210 4355	Ø78x Ø25/30	25 / 30	Ø 78,7	38	40	255	50	36	8	11,5
3210 4360	Ø78 x Ø35	35	Ø 78,7	38	40	255	50	36	8	11,5
3210 4362	Ø78x Ø25/30	25 / 30	Ø 78,7	38	40	274	53	49	10	13,4
3210 4363	Ø78 x Ø30/35	30 / 35	Ø 78,7	38	40	274	53	49	10	13,4